

FAQs

1. Is WCLP the same thing as the Present Use Value Program (PUV)?

WCLP and PUV both offer property tax deferments but are separate programs with different goals. Any given acre can only be enrolled in one of these programs.

2. What if I have Threatened and Endangered (T & E) plants on my property?

T&E plant species do not qualify under Criterion 1, but the land may qualify under another WCLP criteria.

3. Do I meet the WCLP acreage requirements?

A landowner must have at least 20 contiguous acres that meet the qualifying criteria, not just 20 acres of land. Homesites, developed areas, lawns and acreage managed for agricultural or forestry production are not considered eligible for WCLP.



Tiger Salamander

Photo credits go here once pics are finalized.
1,000 copies of this document were printed at a total cost
of \$XXX.XX or \$o.XXXX/copy. 2021

FAQs (continued)

4. When should a landowner start the application process?

The habitat agreement must be completed, approved and signed before Dec. 31. It is best to start developing the conservation agreement at least 3 months before you plan to apply.

5. How can I get more information on WCLP?

A detailed description of priority habitats, list of protected species and qualifying management activities, in addition to the program requirements and penalties, can be found online: ncwildlife.org/WCLP.

6. Who do I contact to determine if my property will qualify for this program?

For additional information on WCLP or to schedule a site visit, contact the Wildlife Conservation Biologist who serves your area: ncwildlife.org/WMDistrictContacts.

For more information, contact:



Wildlife Management Division

ncwildlife.org/WCLP

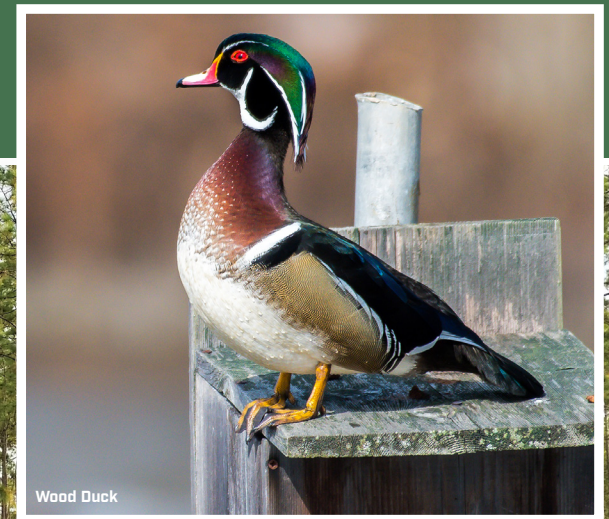
919-707-0050



North Carolina Wildlife
Resources Commission's



WILDLIFE CONSERVATION LAND PROGRAM



Wood Duck



Wildlife Conservation Land Program

The Wildlife Conservation Land Program (WCLP) allows landowners who manage their property for protected wildlife species, priority wildlife habitats or as Wildlife Reserve Land to apply for a property tax deferment. Landowners must meet all of the following requirements to be eligible for WCLP.

1. Wildlife Habitat Conservation Agreement:

The landowner will enter into a Wildlife Habitat Conservation Agreement (WHCA) with the N.C. Wildlife Resources Commission (NCWRC). This agreement will provide detailed specifications for the management of the qualifying acreage.

2. Acreage: The landowner must own at least 20 contiguous acres of qualifying land. There are acreage enrollment limits that depend on location and qualifying criteria.

3. Ownership: Qualifying acreage must be owned by an individual, family business, or family trust. A five-year ownership tenure must be met prior to enrolling in WCLP. There are ownership tenure exceptions when WCLP acres are transferred to a new owner or in certain situations involving family businesses or family trusts.

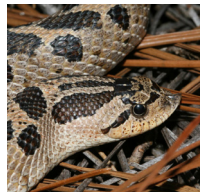


White-tailed Deer

Qualifying Criteria

1. Protected Species

An animal on the state list of endangered, threatened, or special concern species has been identified on the property and management will protect and promote that species.



Southern Hognose Snake



Alleghany Woodrat



Barn Owl

To find a complete list of qualifying species, visit ncwildlife.org/ETSC.

2. Priority Habitats

The enrolled acreage must be managed to maintain or enhance one or more priority habitats.

- Longleaf pine forest
- Stream & riparian zone
- Early successional habitat
- Rock outcrop
- Small wetland community
- Bat cave

3. Wildlife Reserve Land

Land is regularly used for hunting, fishing, shooting, wildlife observation, or other wildlife activities. At least three of the following management activities must be implemented according to the WHCA.

- Supplemental food
- Habitat control
- Supplemental water
- Erosion control
- Supplemental shelter
- Predator control
- Census of animal population on the land

Application Process

To apply for WCLP, first contact NCWRC staff to determine if your property meets ownership eligibility for the program and determine if your management objectives align with one of the qualifying criteria.

Qualifying properties must have an approved WHCA, which will document the occurrence of a protected wildlife species, the presence of priority habitats and/or activities to meet the Wildlife Reserve Land criterion. The agreement will describe existing conditions and future management strategies, which will ensure the program requirements are met.

The signed WHCA must be submitted, along with application form AV-56, to the county tax assessor's office during the month of January, or within 60 days of the transfer of property currently enrolled in WCLP. The county tax assessor will determine if the land qualifies for the WCLP deferment.

County tax offices may request periodic site visits to ensure habitat agreements are being followed, in accordance with program requirements. Properties enrolled as Wildlife Reserve Land will be visited by a NCWRC biologist every 5 years for evaluation and review of the WHCA.

Landowners found out of compliance with WCLP will be required to pay the deferred taxes for the preceding three years and an interest penalty.